

SPOTLIGHT ON KIWISAVER

3,123,868

FSC KIWISAVER MEMBERS



\$117.69
BILLION

FUNDS MANAGED

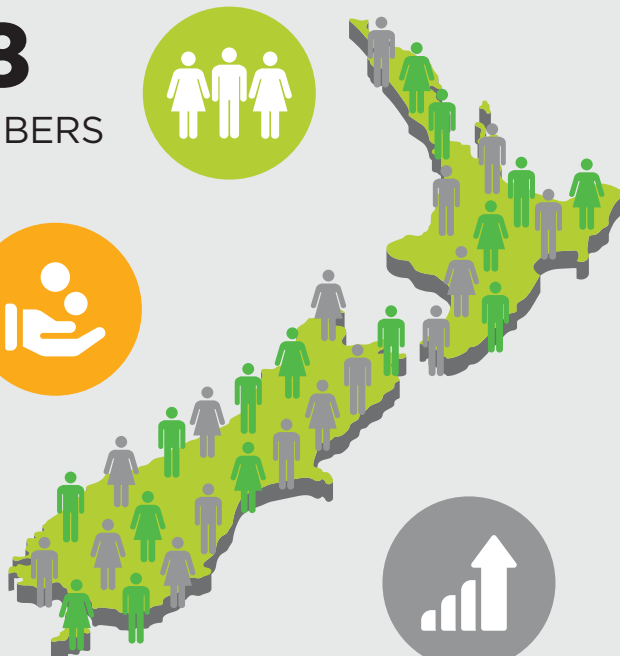


16.16%
INCREASE

IN FUNDS UNDER
MANAGEMENT
IN THE 12 MONTHS TO 30 JUN 2025

3.99%
INCREASE

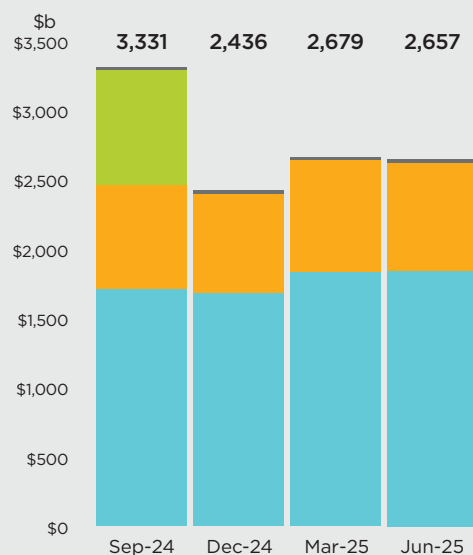
IN NUMBER OF
KIWISAVER MEMBERS
12 MONTHS TO 30 JUN 2025



QUARTERLY SNAPSHOT

AS AT 30 JUNE 2025

QUARTERLY KIWISAVER CONTRIBUTIONS



■ Employee/Member Contributions (salary + voluntary) ■ Government Contributions
■ Employer Contributions ■ Other Contributions

\$37.7K

AVERAGE MEMBER
BALANCE



\$11.1
BILLION

TOTAL CONTRIBUTIONS
IN THE 12 MONTHS TO
30 JUN 2025



\$1.85
BILLION

MEMBER
CONTRIBUTIONS
IN THE THREE MONTHS
TO 30 JUN 2025

\$1,449

TOTAL AVERAGE
CONTRIBUTIONS
IN THE 12 MONTHS
TO 30 JUN 2025

Source: FSC Quarterly KiwiSaver Statistics, 30 June 2025. FSC statistics cover 91.5% of total KiwiSaver Funds under Management (based on RBNZ data as at 31 March 2025), gathered from FSC members and non-members.

www.fsc.org.nz

**Financial Services
Council NZ**